

DISCOVERY HOUSE
1ST FLOOR



DISCOVERY HOUSE
2ND FLOOR

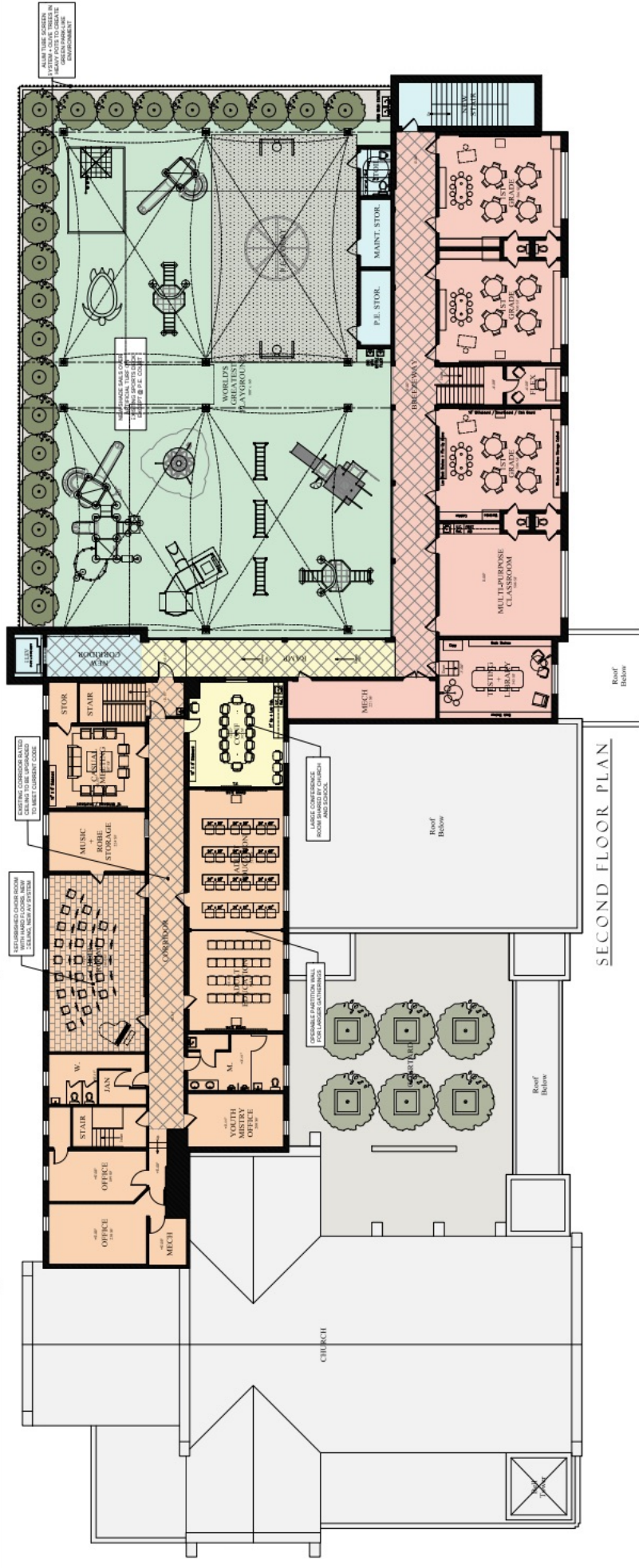
LEGEND

- New Construction
- Primary School Renovations
- Church Renovations
- Common Space Renovations
- Total Interior + Ext. Remodel



GENERAL NOTES

1. The Orleans Campus Master Plan includes New Educational Facilities for Pre-K thru First Grade, as well as expanded and improved Meeting, Music and Adult Education spaces for the Church. Improvements to the Campus Exterior emphasize security, architectural appropriateness and enriched outdoor spaces for both children and adults.
2. Key Improvements to the Church include: Wheelchair Lift from Sanctuary to ADA Toilet and Church Offices; Upgraded Lobby Room; Upgraded Administration Area; Upgraded Sanctuary, Vestry and Altar Guild; Major Improvements to Parish Hall including new doors linking the Hall to the Courtyard; New Ecclesiastical Lighting in Sanctuary; New Ecclesiastical Lighting in Vestry; New Ecclesiastical Lighting in Parish Hall; Improved Circulation and overall update to eliminate the 1990's institutional feel by providing welcoming and updated facilities that enhance the church environment.
3. Key Improvements to the Primary School include: Spaces and Well-Defined Entrance and Administration Areas; New student-assembly Exit Stairs to meet Life Safety Code; Large Teacher Workroom / Breakroom; "World's Greatest Playground" with Artificial Turf, P.E. Sports Deck, Large Shade Canopies, Trees + Age-Appropriate Playground Equipment; Nurturing Educational Spaces with 21st Century Classroom Furnishings and Instructional Equipment; Small Library and Testing Room; Multi-Purpose Classroom; Safes, Inviting and Inspiring Environments; Outdoor Learning Classroom; Infirmary and Conference Room.
4. Basic Interior Renovations include: New Flooring; New Ceilings; New Lighting; New Paint or Wallcovering; New Audio Visual Equipment and New Mechanical Systems.



SECOND FLOOR PLAN



St. John's Church and Episcopal Parish Day School

CAMPUS MASTER PLAN - ORLEANS AVENUE
COOPER JOHNSON SMITH PETERSON ARCHITECTS INC

May 10th, 2019

SCALE: 1/8" = 1'-0"

