



ST. JOHN'S
Episcopal Parish Day School



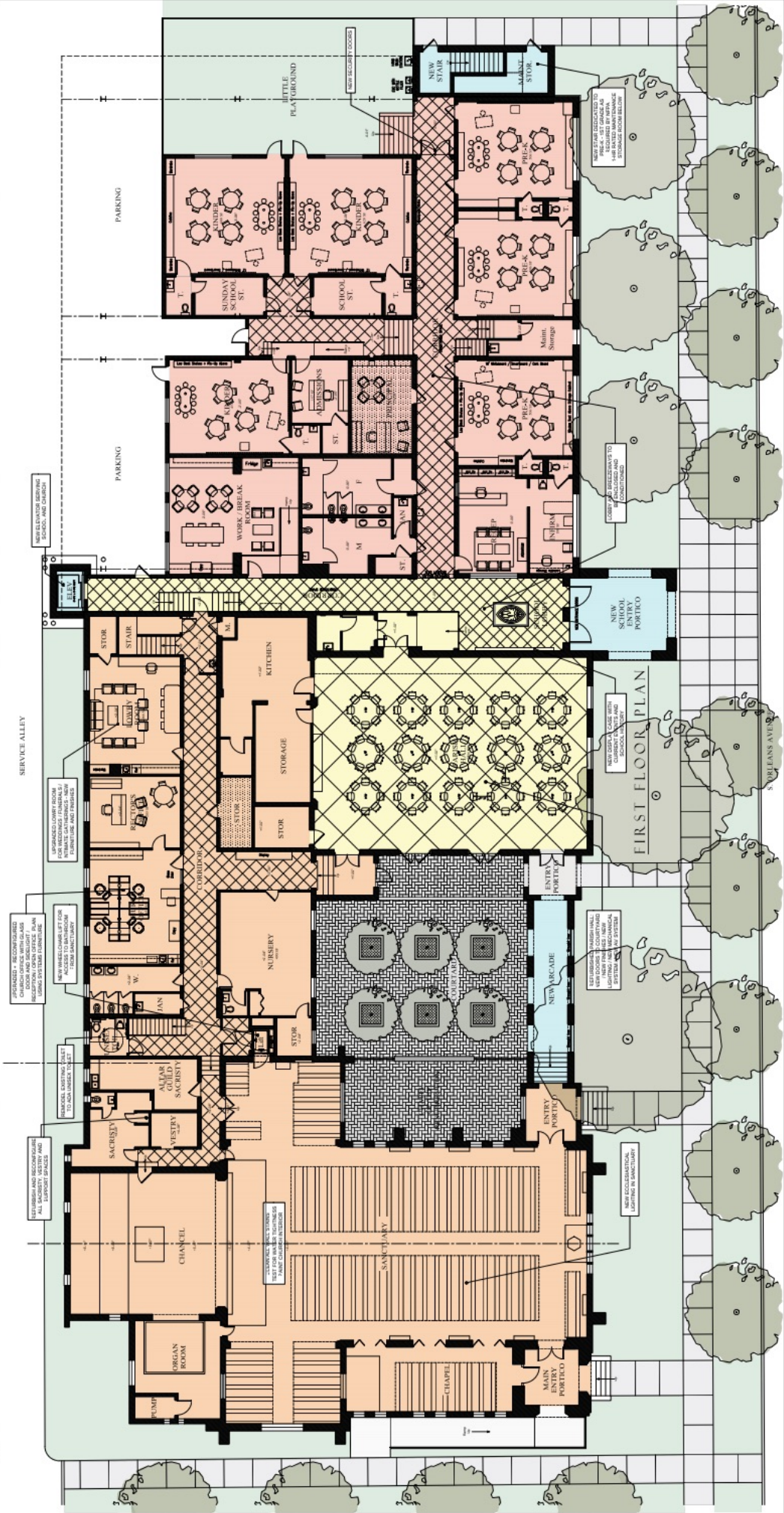
ST. JOHN'S CHURCH
IN THE EPISCOPAL DIOCESE OF SOUTHWEST FLORIDA

GENERAL NOTES

1. The Orleans Campus Master Plan includes New Educational Facilities for Pres-K, 1st-5th Grade, an auditorium and improved Meeting, Music and Adult Education spaces for the Church. Improvements to the Campus Exterior emphasize security, architectural appearance and creating outdoor spaces for both children and adults.
2. Key Improvements to the Church include: Wheelchair Lift from Sanctuary to ADA Toilet and Church Offices; Upgraded Entry; Upgraded Administration Area; Upgraded Sanctuary, Vestry and Aisle Guild; Major Improvements to Parish Hall including new doors linking the Hall to the Courtyard; New Ecclesiastical Lighting in Sanctuary; Casual Meeting Area; Conference Room; New Elevator shared with School; Improved Choral Room; Arcade linking Church to Parish Hall; Improved Circulation and overall update to eliminate the 1950's institutional feel by providing welcoming and updated facilities that enhance the church environment.
3. Key Improvements to the Primary School include: Secure and Well-Defined Entrance and Administration Areas; New student-only Exit Stair to meet Life Safety Code; Large Newer Workrooms / Breakroom; "World's Greatest Playground" with Artificial Turf; P.E. Sports Deck; Large Shade Canopies; Trees + Age-Appropriate Playground Equipment; Improved Circulation; New Library and Testing Room; Adult-Superv. Classroom; Safe; Having and Inspirational Environments; Outdoor Learning Classroom; Infirmary and Conference Room.
4. Basic Interior Renovations include: New Flooring; New Ceilings; New Lighting; New Paint or Wallcovering; New Audio Visual Equipment and New Mechanical Systems.

LEGEND

- New Construction
- Primary School Renovations
- Church Renovations
- Common Space Renovations
- Total Interior + Ext. Remodel



St. John's Church and Episcopal Parish Day School
CAMPUS MASTER PLAN - ORLEANS AVENUE
COOPER JOHNSON SMITH PETERSON ARCHITECTS INC

May 10th, 2019

SCALE: 1/8" = 1'-0"